

# CMA Wireless Module™

Made in the USA



For use with Garrett PD 6500i

## SPECIFICATIONS:

### Communication Input:

RS485 Garrett proprietary communications protocol

### Communications Output:

802.11 ac/b/g/n protocol at 2.4GHz and 5GHz  
WEP (40 bits and 104 bits), WPA-Personal/Enterprise,  
WPA 2 Personal/Enterprise  
802.1x support for all EAP variants, including LEAP  
RS 485 for additional Garrett devices such as Remote Control

### Network Requirements

Static IPV4 Address for each CMA

### System/Software Requirements:

Personal Computer and Wireless Network  
Garrett CMA Connect Software  
Java Runtime (provided)

### Simultaneous Connections:

1 Control session  
1 Monitor session

**Memory:** 8 Mb Flash

### Built In Features:

Clock with internal battery backup  
Secondary local Wi-Fi channel reserved for device configuration  
Real time communication of PD 6500i settings and status  
12 month alarm history  
Powered from the PD 6500i via the RS485 communication cable

### Controls:

Pushbutton to enable configuration channel broadcast and access  
Power Cycle to block configuration channel broadcast and access

### Indicators:

RS485 Active  
Configuration Enabled  
Wireless Data  
Wireless Connection

### Antenna:

Weatherproof External Dual Band Dipole with RSMA connector

### FCC and Industry Canada Certification

### Power:

15 Volt, 3.75 Watts

### Dimensions:

4.5 x 1.2 x 5.9 in (11.4 x 2.9 x 14.9 cm)  
9.2 oz. (.26 Kg)

### Operating Temperatures:

-4°F (-20°C) to 158°F (70°C)  
Environmental Module protected inside PD 6500i housing

### Warranty:

Limited, 24 months parts and labor

## *Gain real-time access to all walk-through detectors on your network!*

Used in conjunction with Garrett's PD 6500i model detector, the CMA Wireless Module allows control, real time monitoring, diagnostics and group management wirelessly from a remote location. The internal memory records all changes to settings, passenger traffic and alarm history for analytical evaluation.



## FEATURES AND FUNCTIONALITY

- **Check settings and diagnose issues** from your network computer.
- **Analyze security checkpoint** alarm rates, patron counts and other diagnostic statistics. 12-Month alarm history offers one-year rolling log file.
- **Control** walk-through settings remotely as individual units or as groups.
- **Real-time data output** of activity can be viewed on your PC.
- **No separate power is required.** Uses walk-through power.
- **No special software required.** Garrett's CMA Connect software is included with each CMA Wireless Module. See reverse side for details on this software.



1.800.234.6151 (USA and Canada)

1.972.494.6151

1881 W. State Street  
Garland, TX 75042

Email: security@garrett.com

# Model #1168900\* CMA Interface Package Wireless

\* Includes CMA Connect Software and CMA Wireless Module

Made in the USA



## Monitor and Control your walk-through from anywhere in the world.

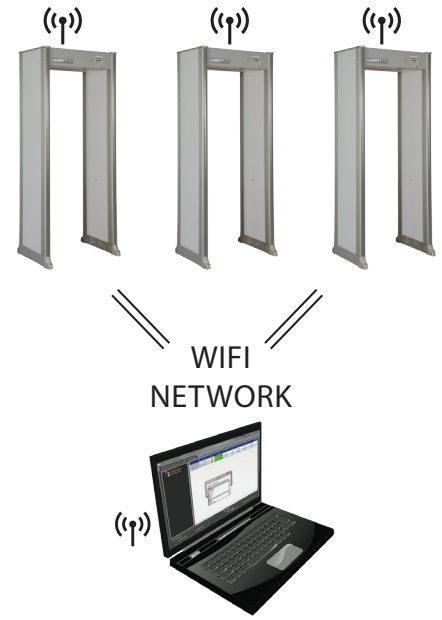
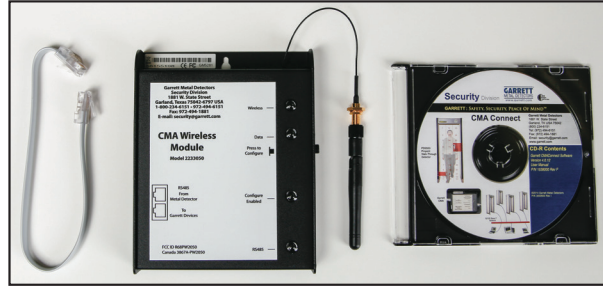
### SPECIFICATIONS:

#### System Requirements:

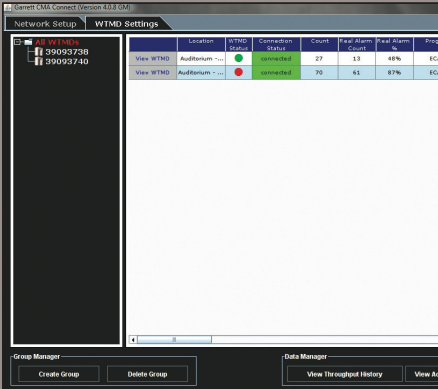
- WIFI Network
- CD-ROM to load application software
- Static IP Address to be assigned to each individual CMA module

#### Software Requirements:

- CMA Connect™ software (Included)
- Current Java™ Runtime Environment



## CMA Connect™ Software

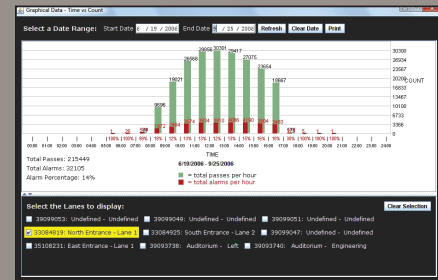
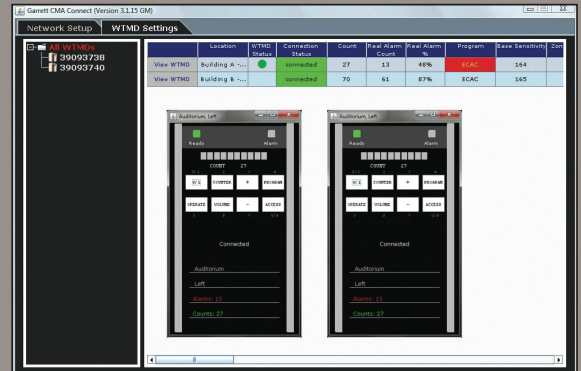


### MONITOR

◀ View all the walk-throughs in your network for real time monitoring of status, patron counts and alarms.

### CONTROL

▶ Supervisors can use the CMA Interface Module to remotely troubleshoot or change detector settings.



### ANALYZE

▲ The CMA allows you to download and save up to 1 year of data for analysis of the activities and statistics for each walk-through metal detector in your network.

### MANAGE GROUPS

◀ Group Management allows the walkthroughs to be organized as groups for viewing. Settings can be pushed out to groups simultaneously when required.



1.800.234.6151 (USA and Canada)

1.972.494.6151

1881 W. State Street  
Garland, TX 75042

Email: security@garrett.com